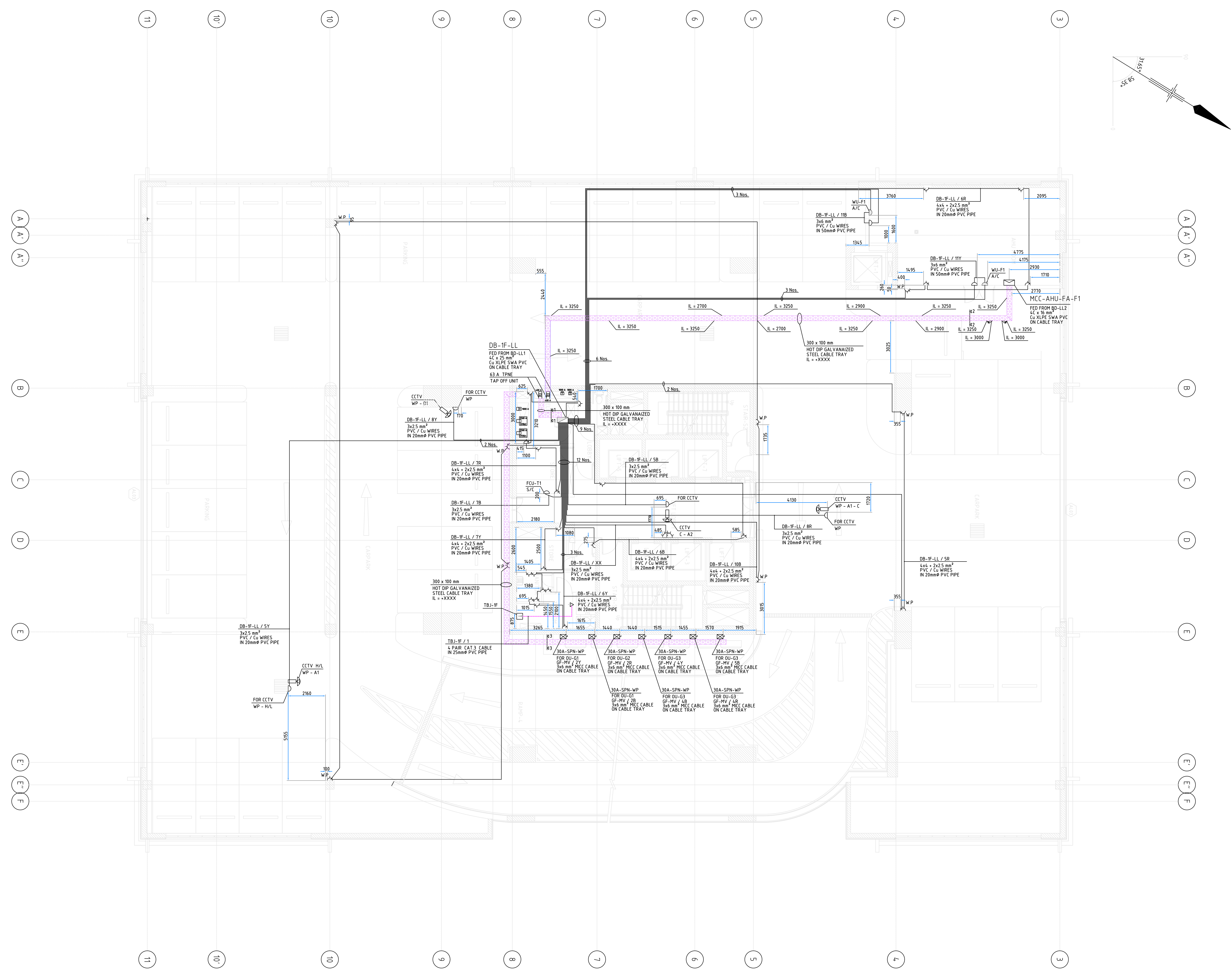
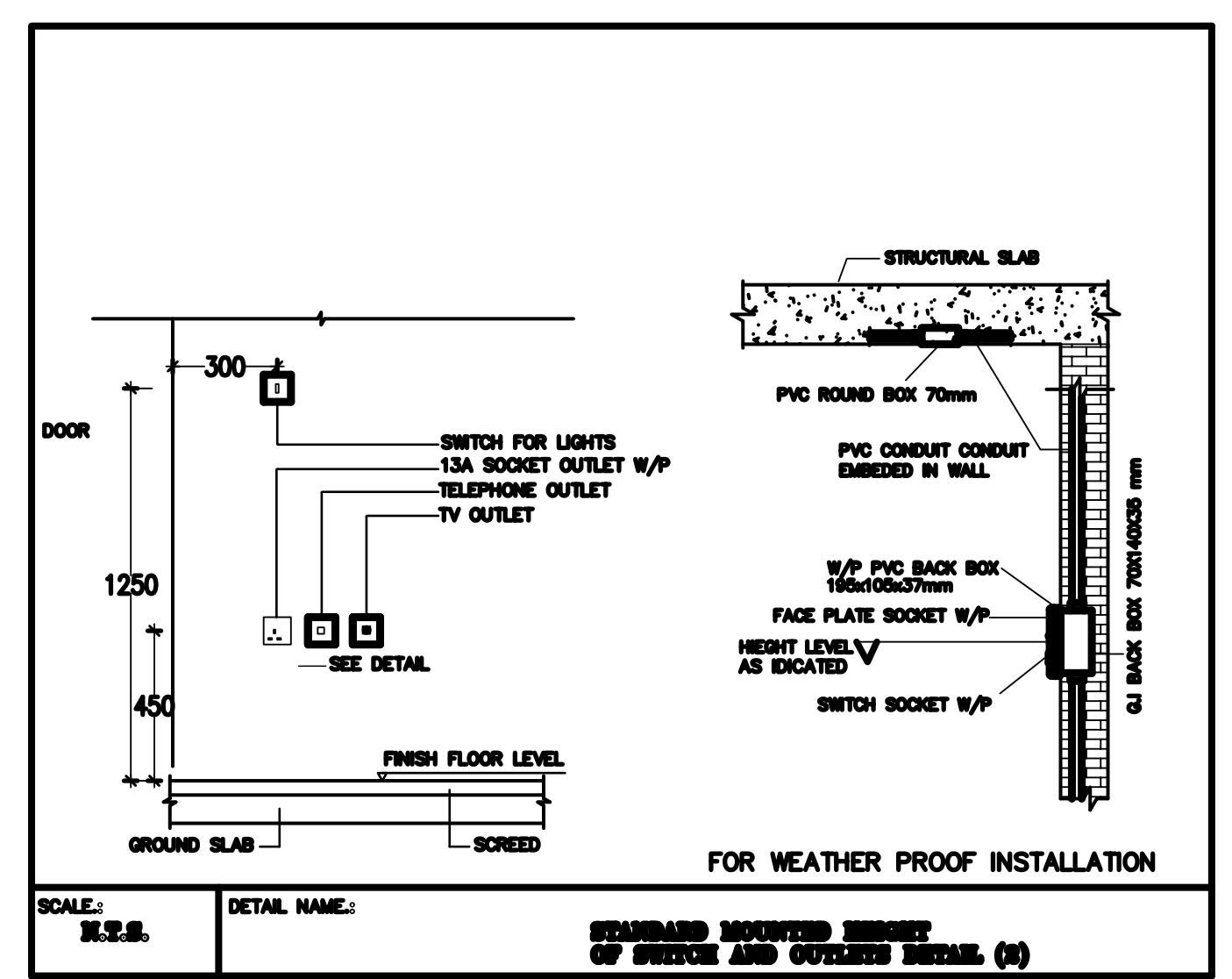
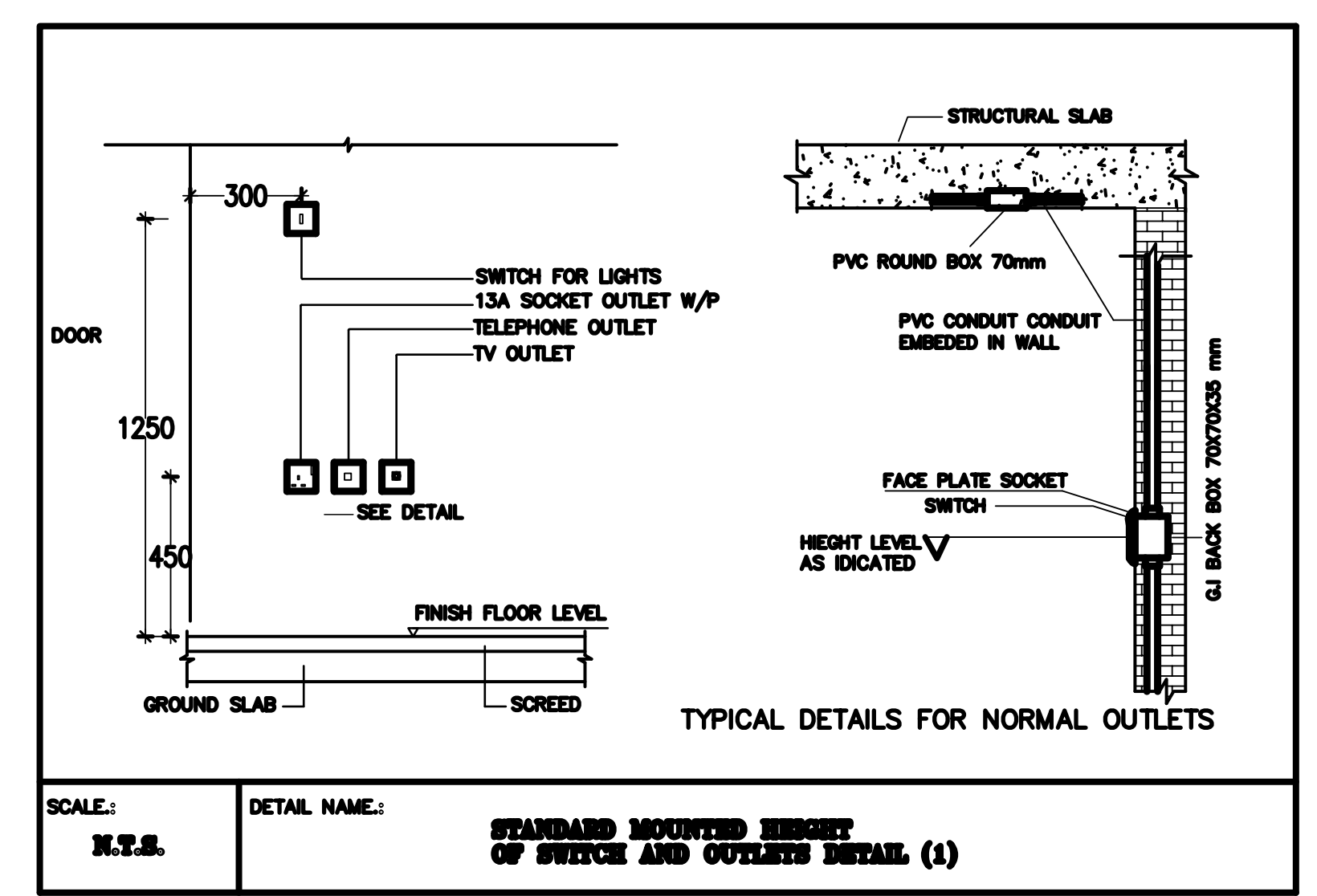
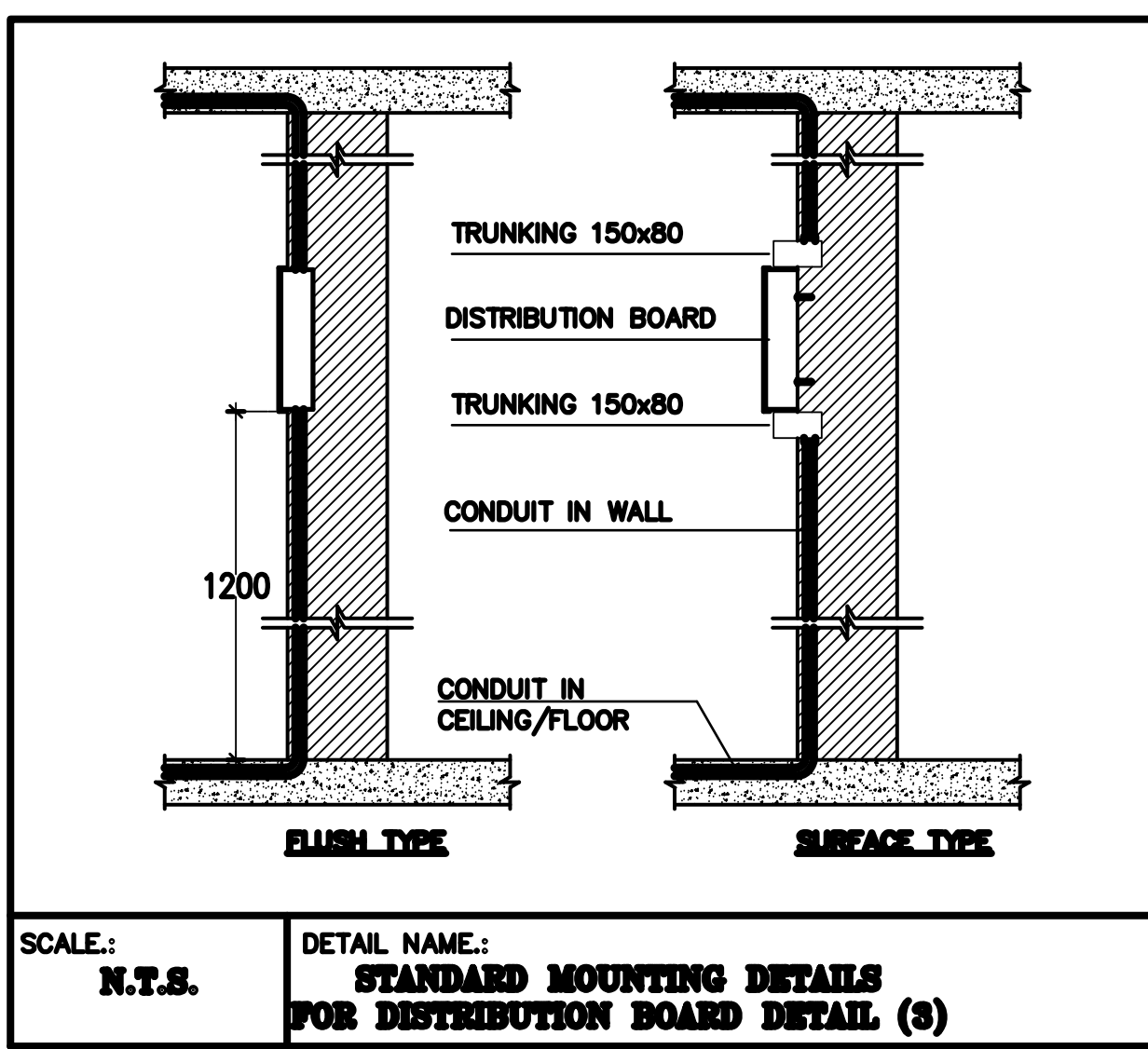
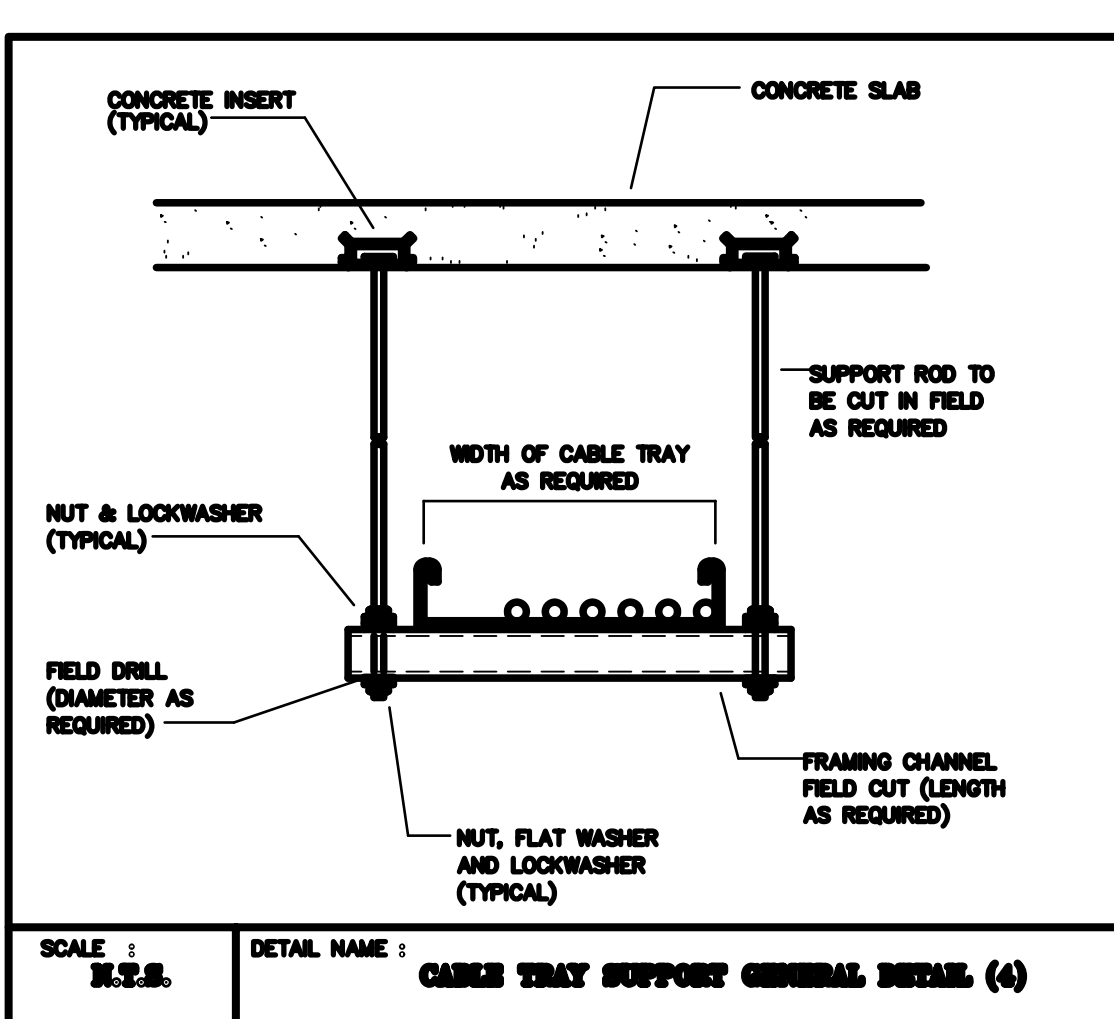
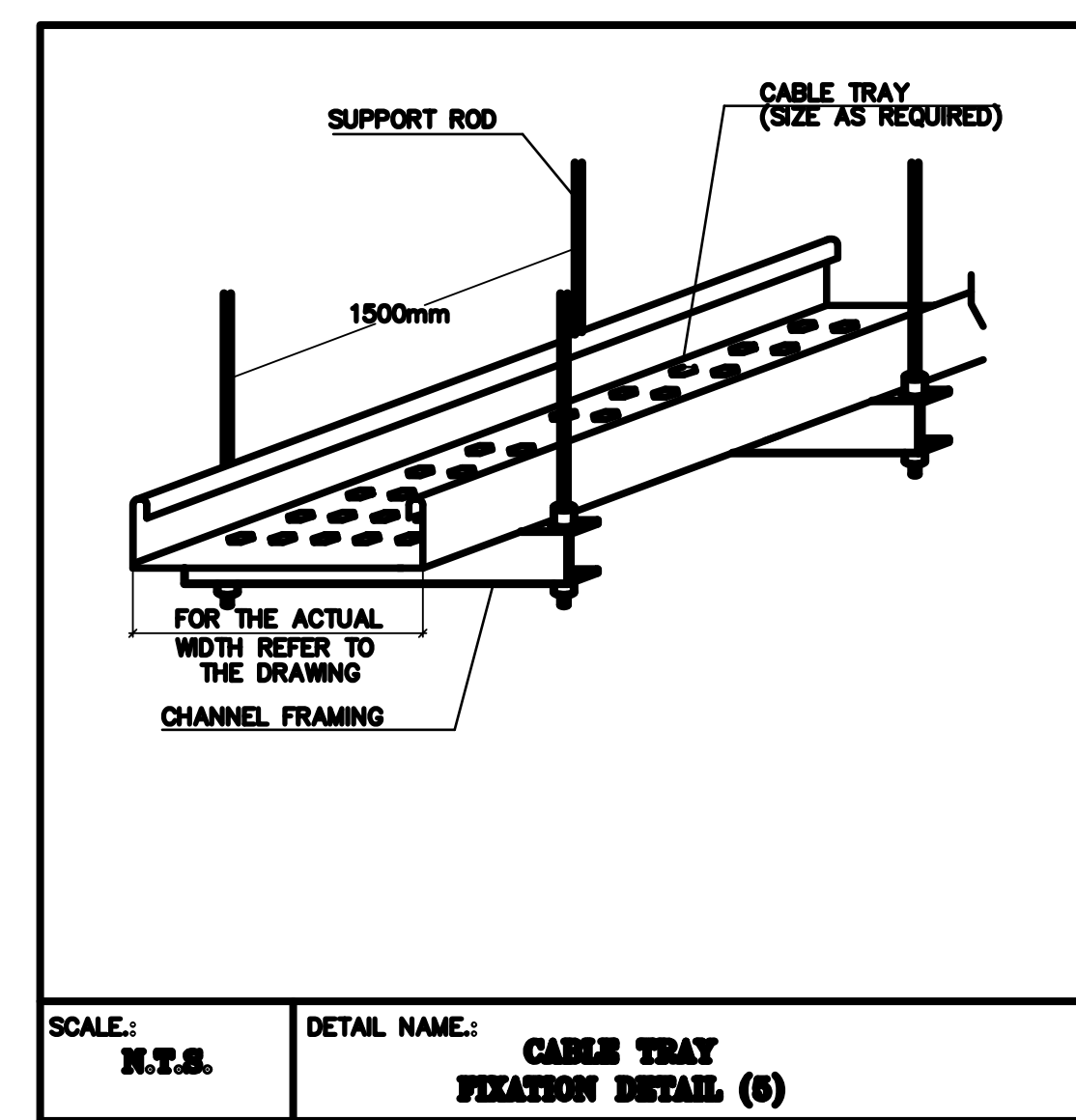
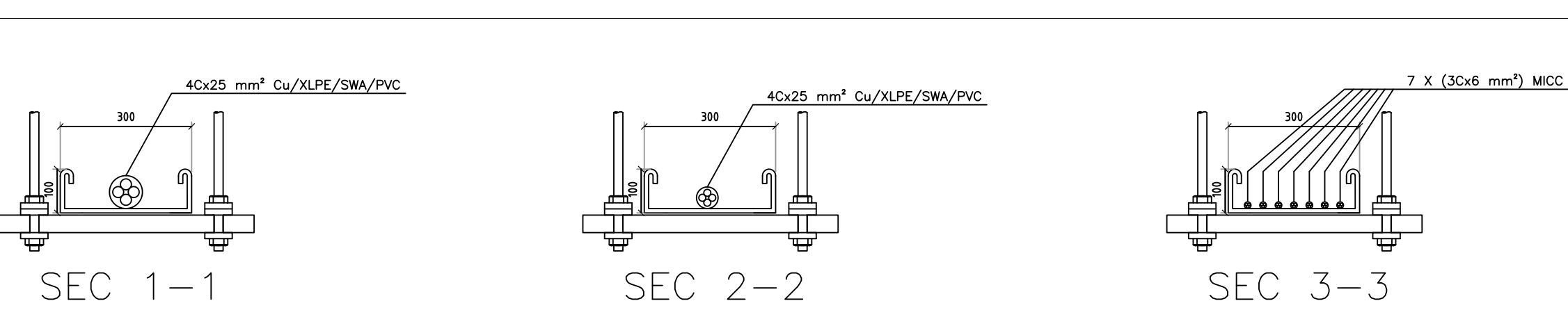


DB REF. & LOCATION		DB-1F-LL (FIRST FLOOR)										
FED FROM		REFER TO SCHEMATIC DIAGRAM										
FEEDER SIZE		REFER TO SCHEMATIC DIAGRAM										
WAY No.	PHASE BREAK COLOR SIZE	DESCRIPTION	LOCATION	TYPE OF LOAD	WIRE SIZE	TYPE OF CABLE	CONTA. RATE (Amp)	CONTA. REF. No.	PHASE LOAD	PHASE LOAD	PHASE LOAD	E.L.C.B. 30mA SENSITIVITY
1	R 10	8x100	PARK AREA	LTG	3x2.5	PVC	16	C1	800			
	Y 10	5x100	PARK AREA	LTG	3x2.5	PVC	16	C2		500		
	B 16	12x100	DRIVE WAY	LTG	3x2.5	PVC	16	C3			1200	
2	R 10	14x100	DRIVE WAY	LTG	3x2.5	PVC	16	C4	1400			
	Y 10	6x100	PARK AREA	LTG	3x2.5	PVC	16	C5		600		
	B 10	6x100	PARK AREA	LTG	3x2.5	PVC	16	C6			600	
3	R 10	11x100	LIFT LOBBY	LTG	3x2.5	PVC	16	C7	1100			
	Y 10*	5x100	STORE+TELECOM	LTG	3x2.5	PVC	-	-		500		
	B 10	4x100	STORE+ELECT	LTG	3x2.5	PVC	-	-			400	
4	R 10	7x100	AHU ROOM	LTG	3x2.5	PVC	-	-		700		
	Y 16	14x100	LIFT LOBBY	LTG	3x2.5	PVC	16	C8		1400		
	B 16	1x1000	LIFT LOBBY FLASHER	RSD	4x4+2x2.5	PVC	-	-				
5	R 30*	2x100	DRIVE WAY	G.P	4x4+2x2.5	PVC	-	-		200		
	Y 6	1x200	DRIVE WAY CCTV	G.P	3x2.5	PVC	-	-		200		
	B 6	1x200	DRIVE WAY CCTV	G.P	3x2.5	PVC	-	-		200		
6	R 30*	5x100	AHU ROOM	RSD	4x4+2x2.5	PVC	-	-		500		
	Y 30*	8x100	TELECOM	RSD	4x4+2x2.5	PVC	-	-		800		
	B 30*	3x100	LIFT LOBBY	RSD	4x4+2x2.5	PVC	-	-			300	
7	R 30*	5x100	ELECTRIC ROOM+STORE	RSD	4x4+2x2.5	PVC	-	-		500		
	Y 30*	2x100	STORE	RSD	4x4+2x2.5	PVC	-	-		200		
	B 10	FCU-T1	STORE	FCU	3x2.5	PVC	-	-			750	
8	R 6	1x200	DRIVE WAY CCTV	G.P	3x2.5	PVC	-	-		200		
	Y 6	1x200	DRIVE WAY CCTV	G.P	3x2.5	PVC	-	-		200		
	B 10	9x100	RAMP	LTG	3x2.5	PVC	-	-			900	
9	R 10	7x100	RAMP	LTG	3x2.5	PVC	-	-			700	
	B 30*	SPARE	-	-	-	-	-	-				
	R 30*	SPARE	-	-	-	-	-	-				
10	Y 30*	SPARE	-	-	-	-	-	-				
	B 30*	6x100	DRIVE WAY	RSD	4x4+2x2.5	PVC	-	-			600	
	R -	SPACE	-	-	-	-	-	-				
11	Y 30	A/C	AHU ROOM	A/C	3x6	PVC	-	-			3000	
	B 30	A/C	AHU ROOM	A/C	3x6	PVC	-	-			3000	
	R -	SPACE	-	-	-	-	-	-				
12	Y -	SPACE	-	-	-	-	-	-				
	B -	SPACE	-	-	-	-	-	-				
	R -	SPACE	-	-	-	-	-	-				
13	Y -	SPACE	-	-	-	-	-	-				
	B -	SPACE	-	-	-	-	-	-				
	Y -	SPACE	-	-	-	-	-	-				
	B -	SPACE	-	-	-	-	-	-				
14	Y -	SPACE	-	-	-	-	-	-				
	B -	SPACE	-	-	-	-	-	-				
LOAD BREAKDOWN												
A/C	W/H	COOKER	LIGHTING	GENERAL POWER	SUB-TOTAL	6300	8100	7950				
6750	W	-	W	11700	W	4400	W	T.C.L. (W)=	22950	W		
6750	W	-	W	9360	W	3120	W	M.D.L.(W)=	19230	W		

⚡	13A SWITCHED TYPE, SINGLE SOCKET OUTLET WP : WEATHER PROOF - MASTER SEAL TYPE CD : METAL CLAD TYPE H/L : HIGH LEVEL
⚡⚡	13A SWITCHED TYPE, DOUBLE SOCKET OUTLET WP : WEATHER PROOF - MASTER SEAL TYPE CD : METAL CLAD TYPE H/L : HIGH LEVEL D : DESK MOUNTED
⌋	FUSED SPUR CONNECTION UNIT WITH LAMP INDICATION S : SWITCHED C : CEILING MOUNTED H/L : HIGH LEVEL CD : METAL CLAD
⌋	FLEX OUTLET CONNECTION UNIT RATING TO SUIT THE ADJACENT SWITCH C : CEILING MOUNTED WP : WEATHER PROOF MASTER SEAL TYPE H/L : HIGH LEVEL
⌋	20A DOUBLE POLE SWITCH, WITH LAMP INDICATION WP : WEATHER PROOF MASTER SEAL TYPE
⚡	FLASHER
⌋	DOOR CONTACT / READ SWITCH WP : WEATHER PROOF
⌋	DISCONNECTION POWER ISOLATOR, RATING AS INDICATED ON DRAWING WP : WEATHER PROOF. SF : SWITCH FUSE.
⌋	MOTOR CONTROL CENTRE (MCC)/CONTROL PANEL
⌋	DISTRIBUTION BOARD FP-FEDER PILLAR-METAL ENCLOSURE-IP-65
⌋	BUS DUCTS RATING AS INDICATED ON DRAWING
⌋	63A PLUG IN TAP OFF UNIT
⌋	HOT DIP G.I. STEEL CABLE TRAY RATING AS INDICATED ON DRAWING
⌋	WIRING IN HEAVY GAUGE PVC CONDUIT EMBEDDED WALL
⌋	WIRING IN HEAVY GAUGE PVC CONDUIT (EMBEDDED) IN CONCEALED IN CEILING SLAB
⌋	KRONE TYPE JUNCTION BOX, HINGED COVER, BACK PLATE AND TERMINAL STRIPS (CAPACITY AS INDICATED)
⌋	TELEPHONE DUAL SOCKET OUTLET (Q-TEL STANDARD) P : PAY PHONE SINGLE SOCKET OUTLET
⌋	CCTV CAMERA A : PTZ/FULL FUNCTION CAMERA, CEILING MOUNTED A1: DITTO AS 'A' ABOVE BUT DOME TYPE A2: PTZ/FULL FUNCTION DOME TYPE RECESSED IN FALSE CEILING A3: PTZ/FULL FUNCTION DOME TYPE CAMERA MOUNTED ON POLE B : PTZ/FULL FUNCTION CAMERA, WALL MOUNTED B1: DITTO AS 'B' ABOVE BUT DOME TYPE C : FIXED CAMERA, RECESSED IN FALSE CEILING/DOME TYPE C1: DITTO AS 'C' ABOVE BUT DOME TYPE C2: FIXED CAMERA CEILING MOUNTED DOME TYPE D : FIXED CAMERA, WALL MOUNTED D1: DITTO AS 'D' ABOVE BUT DOME TYPE WP : WEATHER PROOF

DB REF. & LOCATION		DB-GF-MV (GROUND FLOOR)										
FED FROM		REFER TO SCHEMATIC DIAGRAM										
FEEDER SIZE		REFER TO SCHEMATIC DIAGRAM										
WAY No.	PHASE BREAK COLOR SIZE	DESCRIPTION	LOCATION	TYPE OF LOAD	WIRE SIZE	TYPE OF CABLE	CONTA. RATE (Amp)	CONTA. REF. No.	PHASE LOAD	PHASE LOAD	PHASE LOAD	E.L.C.B. 30mA SENSITIVITY
1	R 10	12x100	MSB ROOM & TX ROOM	LTG	3x2.5	MICC	-	-			1200	
	Y 6	5x100	MSB ROOM & TX ROOM	LTG	3x2.5	MICC	-	-		500		
	B 10	9x100	HV ROOM	LTG	3x2.5	MICC	-	-			900	
2	R 10	A/C SPLIT	MSB ROOM	A/C	3x6	MICC	-	-		3200		
	Y 6	A/C SPLIT	MSB ROOM	A/C	3x6	MICC	-	-			3200	
	B 10	A/C SPLIT	MSB ROOM	A/C	3x6	MICC	-	-			3200	
3	R 30*	3x100	MSB ROOM	RSD	4x4+2x2.5	MICC	-	-		300		
	Y 30*	3x100	TX ROOM	RSD	4x4+2x2.5	MICC	-	-		300		
	B 30*	6x100	HV ROOM	RSD	4x4+2x2.5	MICC	-	-			600	
4	R 30	A/C SPLIT	MSB ROOM	A/C	3x6	MICC	-	-		3200		
	Y 30	A/C SPLIT	MSB ROOM	A/C	3x6	MICC	-	-			3200	
	B 30	A/C SPLIT	MSB ROOM	A/C	3x6	MICC	-	-			3200	
	R 30*	SPARE	-	-	-	-	-	-				
5	Y 30	MCC-EXF	MSB ROOM	G.P	3x6	MICC	-	-		1500		
	B 30	A/C SPLIT	MSB ROOM	A/C	3x6	MICC	-	-			3200	
	R -	SPACE	-	-	-	-	-	-				
6	Y -	SPACE	-	-	-	-	-	-				
	B -	SPACE	-	-	-	-	-	-				
	R -	SPACE	-	-	-	-	-	-				
7	Y -	SPACE	-	-	-	-	-	-				
	B -	SPACE	-	-	-	-	-	-				
	R -	SPACE	-	-	-	-	-	-				
8	Y -	SPACE	-	-	-	-	-	-				
	B -	SPACE	-	-	-	-	-	-				
LOAD BREAKDOWN												
A/C	W/H	COOKER	LIGHTING	GENERAL POWER	SUB-TOTAL	7800	8700	11100				
21300	W	-	W	2600	W	2700	W	T.C.L. (W)=	26600	W		
21300	W	-	W	2080	W	2160	W	M.D.L.(W)=	25540	W		



**SUB CONTRACTOR:**  
T & C QATAR L.L.C. - C.R. 35109  
P.O. Box: 2329 DOHA, QATAR  
TEL: (+974) 4421 833 / 4930 614  
FAX: (+974) 4410 553 / 4930 614

**CONSULTANT:**  
ARAB ENGINEERING BUREAU  
المكتب العربي للهندسة  
ARAB ENGINEERING BUREAU  
المكتب العربي للهندسة  
Telephone: +974 4477 888 Fax: +974 4477 888 P.O. Box: 148 Doha Qatar  
Email: info@aebs.com Web: www.aebs.com

**DESIGNER:**  
GHD  
PO Box 14552 Doha Qatar  
T: +974 442274 F: +974 4444127  
E: soman@ghd.com www.ghd.com.qa

**MAIN CONTRACTOR:**  
AL MADAR CONTRACTING  
P.O. Box: 2329 DOHA, QATAR  
TEL: (+974) 4675405 - 4674466  
FAX: (+974) 4671333 - C.R. : 15061  
WEB SITE: www.almadar-group.com  
Email: conteng@almadar-group.com

**OWNER:**  
ALI ABDUL REDA MASHHADI

**PROJECT:**  
AL NOOR OFFICE TOWER AT NEW DOHA  
2B+G+F+22 FLOORS

**DRAWING TITLE:**  
FIRST FLOOR  
POWER & TELEPHONE

**DRAWING REFERENCE:**  
75-10288-E204 - FIRST FLOOR POWER & EXTRA LOW VOLT.  
75-10288-E000 - LEGEND & NOTE  
75-10288-E501-505 - POWER SCHEMATIC DIAGRAM  
75-10288-E601-603 - TELEPHONE SCHEMATIC DIAGRAM

**DRAWN BY:** L. MANCINI

**CHECKED BY:** M. SHAMIMUDDIN

**APPROVED BY:** M. MOHAMUD

**DATE:** 04.07.07

**SCALE:** 1:100 **SIZE:** A0

**REVISION:** 0

**DATE:** 04.07.07

**DRAWING NO.:** TC01E2F01035  
**SHEET:** 1 OF 2